

Evaluation plan ~ Criteria for Judging Effectiveness

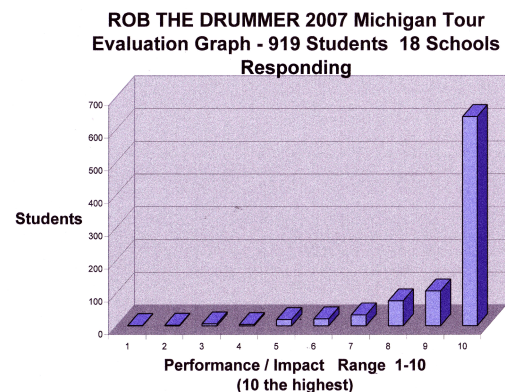
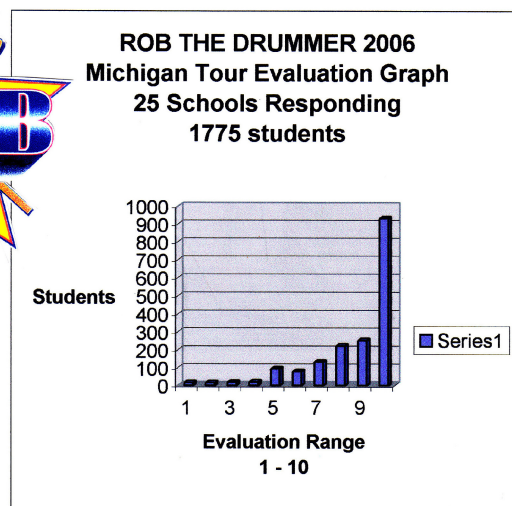
The ROB THE DRUMMER Educational Programs provide materials before and after performance for follow-up. We provide informational questionnaire handouts for the teachers and administrators. The feedback ideally should take place immediately after the concert. All students, of all levels of need, are asked to respond and we encourage facilitation by administrators. Robert Gottfried and The ROB THE DRUMMER staff developed an anonymous student questionnaire for Elementary, Middle and High School levels to rate the positive impact of the presentation and evaluate and respond to Drug Usage and Bullying issues the students have observed or experienced in their respective schools. The information is used to refine the dialogue used during the “core segment dialogue” of the concert directed to these topics. The tabulations or ratings are compared with past years statistics. Testimonial responses from students, staff and administration are valued greatly and are gathered yearly. Completed Student Responses are sent to our Public Relations Office.

The following images are sample TOUR RESPONSE GRAPHS from 2006 to 2016.

A score of 10 has been a constant indicator for the highest rating of the concert presentation . . .

Additionally, Rob often initiates intervention *actions* if needed . . . 2 sample cases in point . . .

1. An anticipated suicide attempted by a student was halted by Rob’s intervention backstage after a concert;
2. Rob’s intervention with the school Crisis Team with regard to a student involved in self-mutilation and incestual molestation led to the student, currently functioning very well now, due to the school’s crisis team that intervened with supported action initiated by our staff.



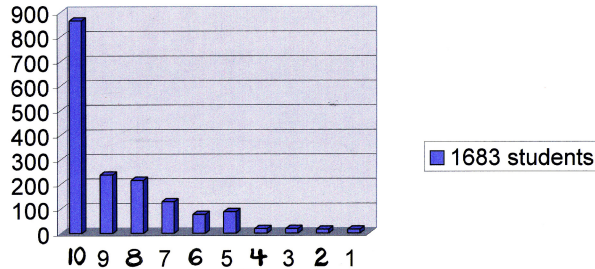
“ It is important to realize that the kids basically have a “what’s in it for me” attitude because many of their parents have the same “survival” attitude. The very reason parents may choose divorce is because they decide that “this is not for me” and “I’m just going to leave my kids and my wife” showing little sense of responsibility. “You’re the one . . . turns into... “You’re the one for right now” in the “what’s in it for me” generation fostering an unstable living and nurturing environment. The nature of the inspiration that comes from this show, is not necessarily something that can be taught - it has to be FELT and EXPERIENCED! After reviewing the data, we are proudly able to come back to the kids and state that “the majority of you got the message!” It makes the administration and teachers and ROB THE DRUMMER a unified faculty combination which is very positive. We have come full circle - a win-win situation!”

RTD

Data is stored in Annual Graphs

2006

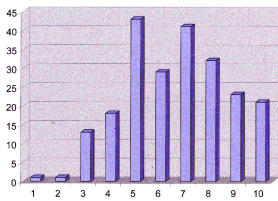
ROB THE DRUMMER: 2006 23-School "Be the Best You Can Be" Show Tour



In a range of 1-10, the above graph indicates the student's evaluation report from 23 responding Michigan schools. These scores represent student evaluation of the long-term effectiveness, quality of performance, relevance to issues of society, and recommendations to other schools of the ROB THE DRUMMER "Be the BEST You Can Be" 2006 Michigan Concert Tour. It is also an indicator and recommendation by students, teachers and administrators that **other schools** should experience and schedule this presentation. With 10 as the highest indicator and 1683 students and teachers responding, the following scores were tabulated: 865 - 10; 238 - 9; 216 - 8; 129 - 7; 77 - 6; 88 - 5; 19 - 4; 19 - 3; 16 - 2; and 16 - 1. 51% of the students - 10; 66% of the students - 9 and 10; 78% of the students scoring 8, 9, or 10.

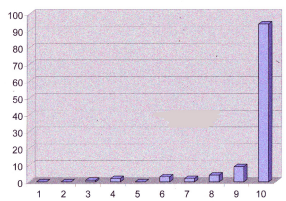
2007

Helen Keller Middle School - Easton, MI

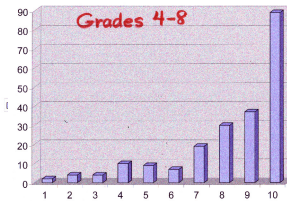


2008 ~ Sample Graph of responding Schools used as informational resources for hosting Principals.

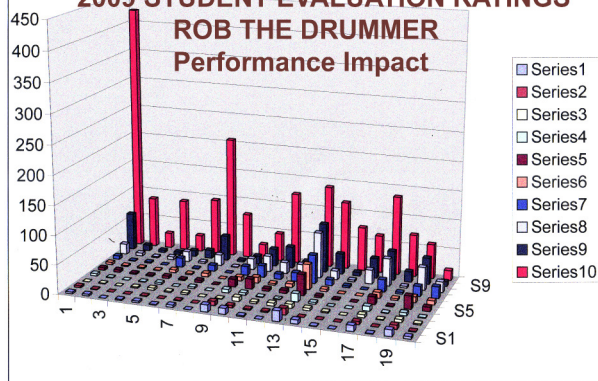
Fortis Academy - GRADES 1-3 Ypsilanti, MI



Fortis Academy - Ypsilanti, MI



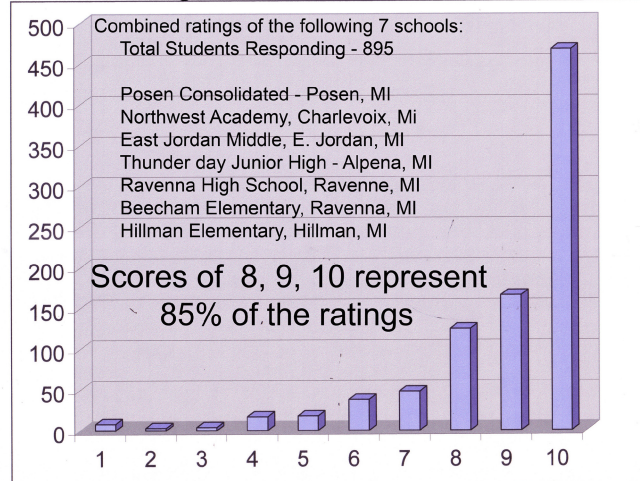
2009 STUDENT EVALUATION RATINGS ROB THE DRUMMER Performance Impact



2009

2010

2010 ROB THE DRUMMER Michigan Tour

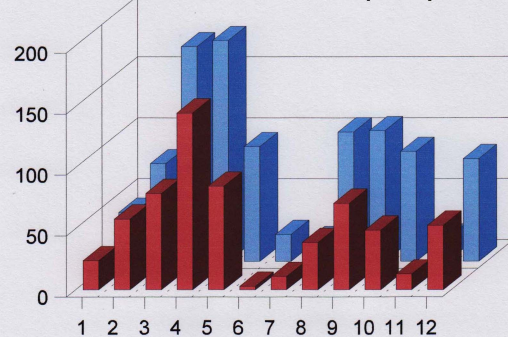


Be The BEST You Can Be Concert Results

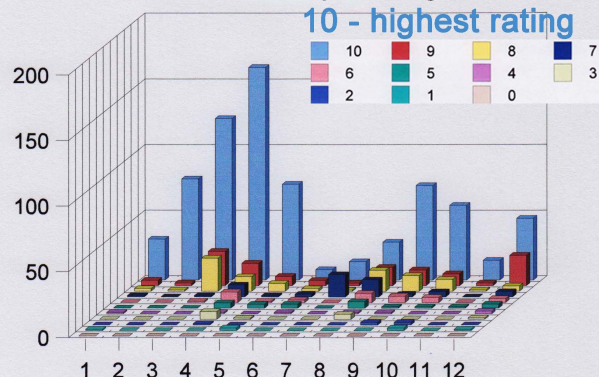
2011

RATIO 2011

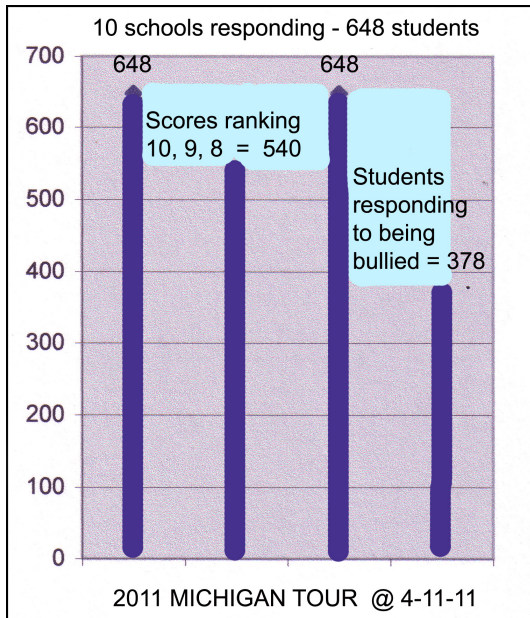
Students population responding - 1047(blue)
of Students BULLIED (642) - red



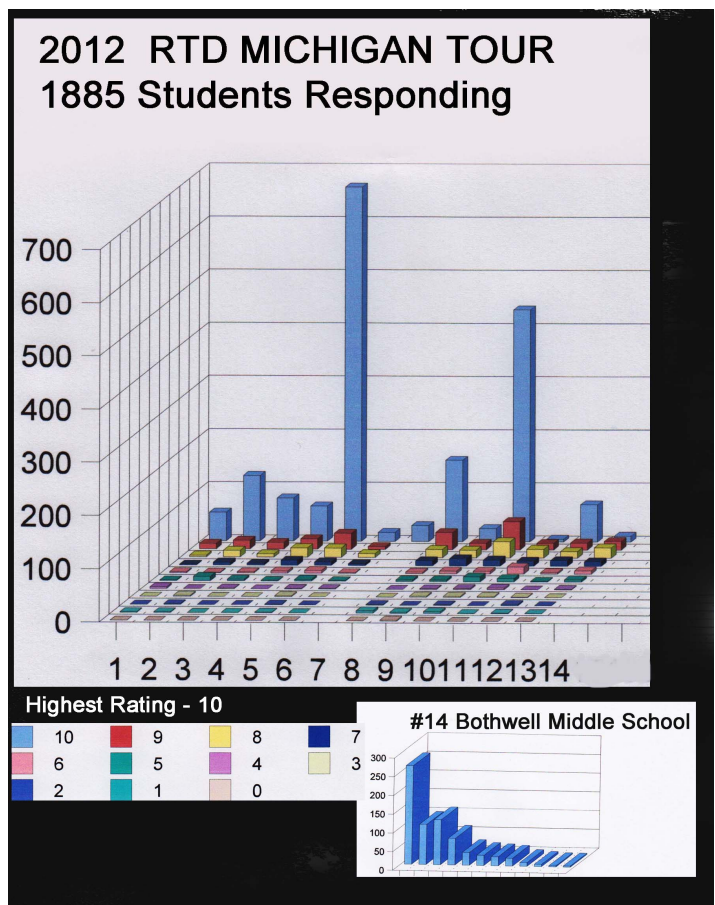
2011 ROB THE DRUMMER MICHIGAN TOUR
1047 Students Responding



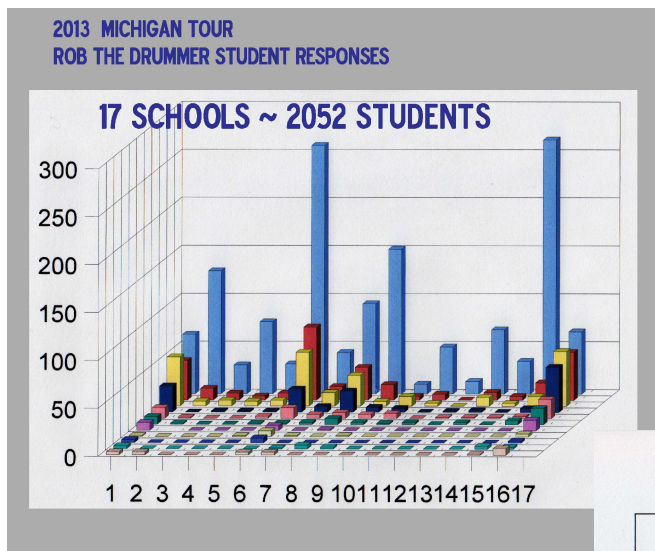
2011



2012

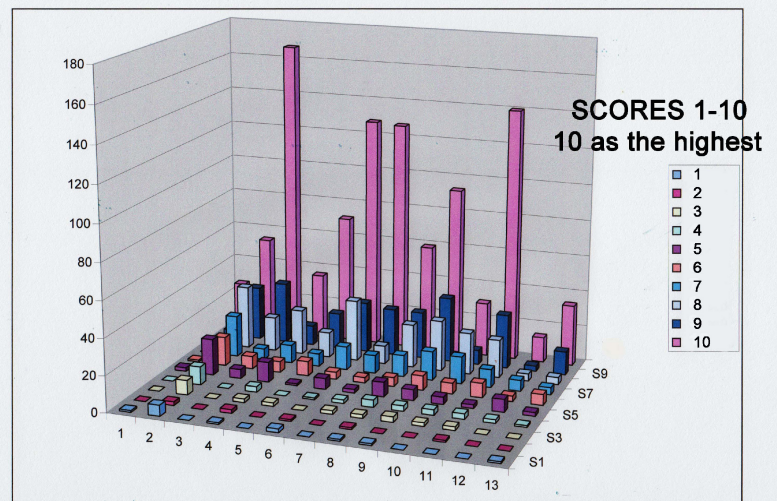


2013



2014

2014 ROB THE DRUMMER Michigan Tour
CONCERT IMPACT - Student Response Ratings



1868 Students Responding ... Additionally

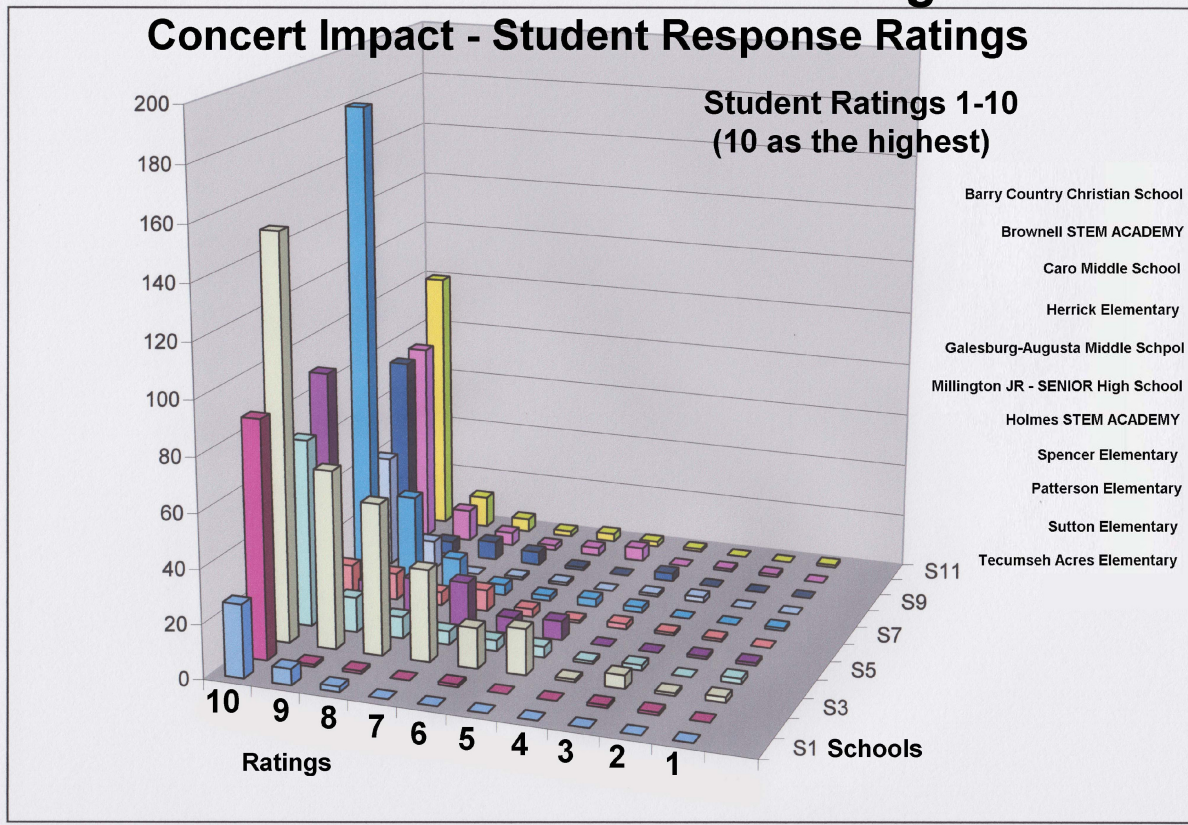
Responses indicated - 802 students had been bullied.

Responses indicated - 904 students concerned about their own school bullying issues.

2015

2015 ROB THE DRUMMER Michigan Tour

Concert Impact - Student Response Ratings



2016

MICHIGAN 2016

ROB THE DRUMMER ~ 1705 Student Responses

